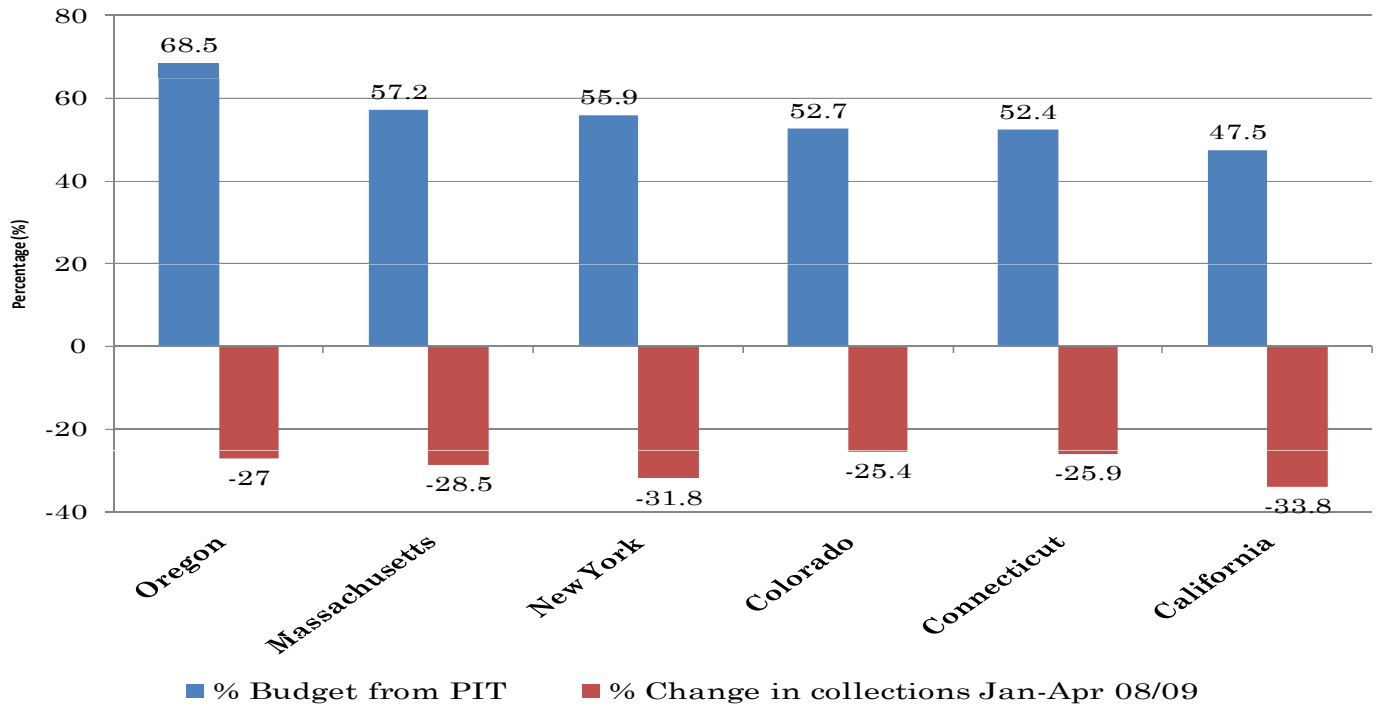


State Income Tax Revenues



States that are highly dependent on personal income taxes (PIT) to fill their budgetary needs are facing steep declines in revenues compared with the same period last year.

Source: Navellier Applied Research, Nelson A. Rockefeller Institute of Government. Chart is for discussion purposes only. Although information in this document has been obtained from sources believed to be reliable, we do not guarantee its accuracy, completeness or fairness, and it should not be relied upon as such.